

# DLC-C2P6-D-E

## Current LED Lighting Controller with Ethernet Interface

Ethernet – the future for Machine Vision

- Uses Same Cabling as GigE
- Configure Using Web Browser
- Integrates with Machine Vision Software

The DLC-C2P6-D-E Range has options for normal or fast pulsing and with Ethernet interface.

The DLC-C2P6-D-E LED Lighting controller has all the features of Lighting controllers. With the introduction of GigE cameras, the machine vision market is moving towards Ethernet. The advantage of Ethernet is that it is fast, long distance, standardised worldwide and implementation is inexpensive.

### Flexible Operation

The DLC-C2P6-D-E provides control of LED lighting for machine vision applications. It includes the power regulation, intensity control, timing and triggering functions required for machine vision systems.

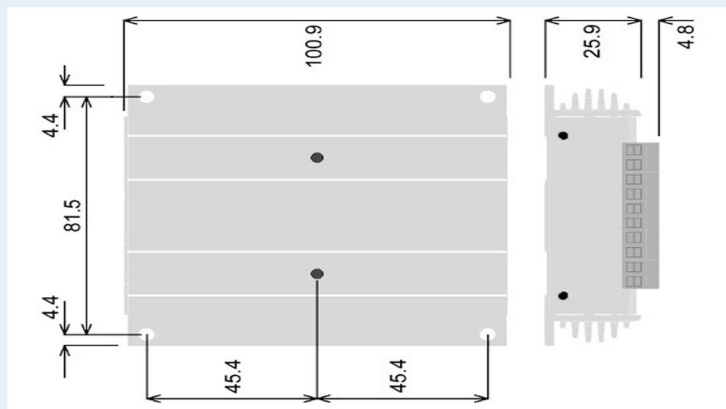
Three modes of operation are provided separately for each channel:

- Continuous:** Output is a continuous current.
- Pulsed:** Output is pulsed once per trigger.
- Switched:** Output switched according to a digital input.

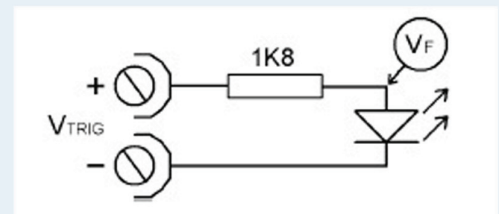
### Way to Configure

Simple string commands can be sent from an application program using TCP/IP or UDP. JM website [www.jm-vistec.com](http://www.jm-vistec.com) has a free download of a demonstration program (with fully commented source) showing how the DLC-C2P6-D-E can be controlled from a PC using Visual Basic.

The configuration is stored in non-volatile memory.



Mechanical Diagram for mounting



Trigger Circuit



JM VisTec System Pte Ltd

The Ethernet connection is provided on a standard RJ45 connector and with two link status lights

## Specification

	DLC-C2P6-D-E Lighting Controller
User interface	Ethernet
Output channels	Two independent constant current outputs
Output current	From 0mA to 6A in steps of 10mA. Up to 2A per channel continuous or 6A pulsed.
Trigger inputs	2 opto-isolated digital inputs. Require 3V to 24V.
Pulse width timing	From 20us to 2000 milliseconds in steps of 20us. Timing repeatability 0.1us
Delay from trigger to pulse	From 20us to 2000 milliseconds in steps of 20us. Timing repeatability 1us
Output voltage	0V to 47V.
Supply voltage	Regulated 12V to 48V. The supply voltage must be at least 1V higher than the output voltage required by the lighting
Dimensions	118mm long by 76mm wide by 27mm high (excluding DIN fixing).
Weight	240g excluding DIN fixing.
Mounting	DIN rail or panel mounting.

Other lighting controllers are available to cover all applications. see [www.jm-vistec.com](http://www.jm-vistec.com).

### Main Office:

JM VisTec System Pte Ltd  
10 Kaki Bukit Rd1,  
#01-40 KB Industrial building  
Singapore 416175  
Tel: +65-67485517  
Fax: +65-67485507

### Branch Office:

JM VisTec (Suzhou) Co.,Ltd  
501 Room C Seat  
Creative Center of SND  
No 117 Zhujiang Rpad  
Suzhou New District  
China 2151101  
Tel: +86-512-6878 1867  
Fax: +86-512-6878-6837

JM Vision Technologies Co, Ltd  
8F-8, No. 16 Lane 609  
Sec 5, Chung Hsin Road  
San Chung City  
Taipei Hsien Taiwan ROC  
Tel: +886-2-2999-8519  
Fax: +886-2-2999-0699



JM VisTec System Pte Ltd